

Circles & Squares

Finished Size: 25" x 30"

MATERIALS

- 1 Cuddle® Sweet Strips pack

OR

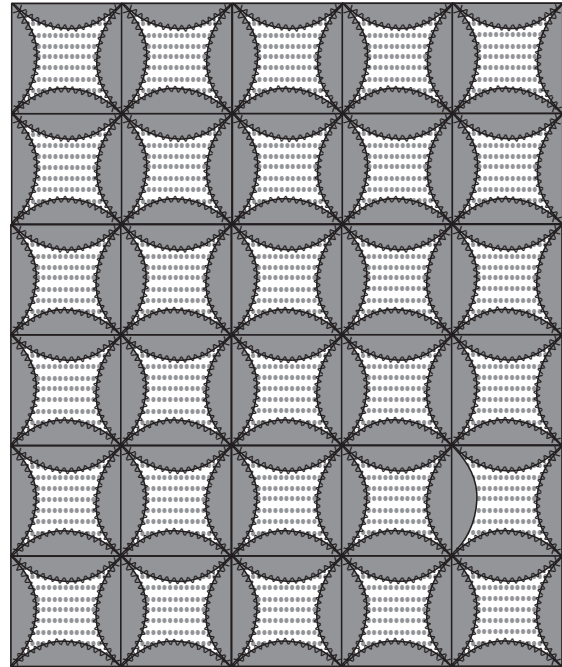
¼ yard each of 5 different Cuddle® fabrics

PLUS

- ⅓ yard interior fabric

OR

variety of scrap fabrics (Cuddle® or quilting cotton)



DIRECTIONS

Cutting

1. Cut 30 circles—6 of each color.

Option One: Accuquilt die cutter with 8" circle die.

Place Cuddle® on the die with the nap side down.

Cut a single or double layer—but no more than 2 at a time.

Option Two: Make a template.

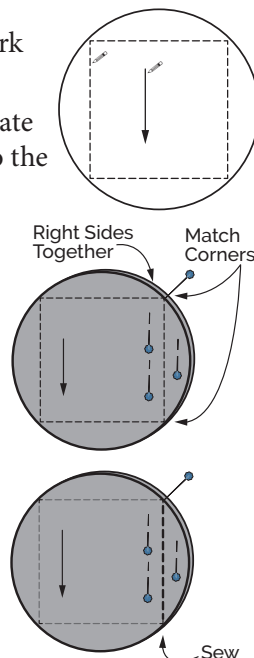
Draw an 8" circle on cardstock to create a template.

Trace the circle on the back of the Cuddle® and cut with scissors or a craft knife.

2. From the interior fabric, cut 30 (5¼" x 5¼") squares.
3. From cardstock, cut a 5½" square for a tracing template.

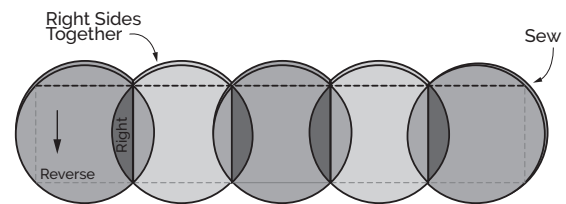
Assembly

1. On the reverse side of each circle, mark the nap direction.
2. Center the 5½"-square tracing template on the reverse of the circle, parallel to the nap. Mark a square in each circle.
3. Reverse side up, arrange circles in 6 rows of 5 circles each for your quilt layout.
4. Pin 2 circles together, right sides together, carefully matching the corners.
5. Sew along the traced line of the square.
6. In the same manner, add another circle to the right side. Complete the row.



7. Make 6 rows.

8. Align the first and second rows. Sew rows together to complete the quilt top.



Finishing

1. Cut cardstock to use as a shield for the spray basting.
2. With the reverse side of the quilt facing up, slide the shields under the crescent-shaped seams.
3. Spray baste the first circle. Place the 5½" fabric square in position.
4. Pat the crescent-shaped seam allowances over the center square. Pat in place.
5. Topstitch each curved edge with a small zigzag or a decorative stitch.
6. Repeat with each circle.

