

# Luxe Cuddle® Mink Stole

Finished Adult Size: 18" x 72"

## Fabric Requirements

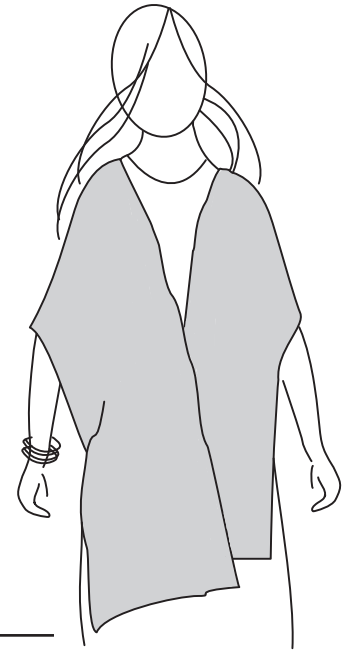
- 1 yard Luxe Cuddle®
- ½ yard Cuddle® 3, matching color

## Suggested Notions

- Polyester thread
- 90/14 stretch machine needle
- Micro-serrated scissors
- Craft knife
- Long flower head pins

## Sewing Basics for Cuddle®

- Increase stitch length to 3–4mm.
- Double pin by using 2 rows of pins—the first row every 1½" along the seam line and a second row 1" to the left and parallel to the cut edge.
- Sew with right sides together.
- Use ½" seam allowance.



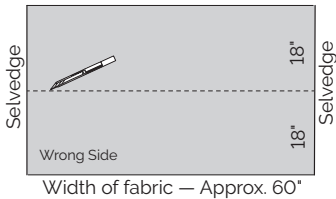
## DIRECTIONS

Right Side

Wrong Side

## Cutting

- From Luxe Cuddle®, cut:
  - 2 (18" x 60") pieces.



Width of fabric — Approx. 60"

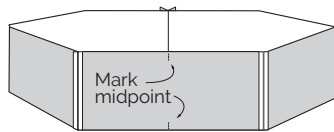
- From Cuddle® 3, cut:
  - 1 (18" x 30") piece.

## Assembly

- Sew both Luxe Cuddle® pieces together, matching naps.

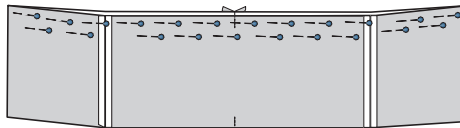


- Fold Cuddle® 3 in half widthwise. Find and mark the center.
- Sew Cuddle® 3 piece to both ends of the Luxe Cuddle® length, creating a loop.



- With right sides together, match the center mark of the Cuddle® 3 to the seam of the Luxe Cuddle®.
- Pin right sides together, using the double pinning technique.

*Note: Work from the center out, being careful not to stretch the fabric.*

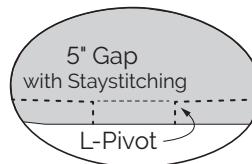


- On the opposite edge, mark a 5" turning gap on both the Luxe Cuddle® and Cuddle® 3. Staystitch the 5" gap on both fabrics.

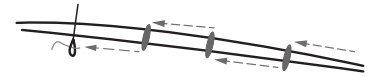
*Note: Mark the gap slightly off from the center, to avoid the seam in the Luxe Cuddle®.*

- Pin this side. First pin the Luxe Cuddle® seam to the Cuddle® 3 mark, then double pin out toward the folds.
- Sew the edge, stitching an L-pivot at the gap.

*Note: An L-Pivot secures the seam ends as the stole is turned and helps the seam allowance turn in at the gap.*



- Turn right side out. Hand stitch the gap using a ladder stitch.



*Note: Ladder stitch: Use polyester thread and a hand sewing needle to catch one side of the opening, then the other. Tighten every few stitches.*

- Using fabric clips or pins to hold the fabrics in position, topstitch along the Cuddle® 3, about ½" from seam edge.



**Now!**

Wrap around shoulders and

—**BAM!**—

you're ready to rock!