

Snowman Hat

Finished Size: 3" tall

Fabric Requirements

- ¼ yards Cuddle® 3 Black, *Hat*
- 4" x 4" square Cuddle® 3 Hunter, *Leaf*
- 6" x 12" Cuddle® 3 Cardinal, *Band & Berries*

Suggested Notions

- 4" x 11" batting
- Polyester fiberfill
- Polyester thread, black, green, and red
- 90/14 Stretch machine needle
- Micro-serrated scissors
- Long flower head pins

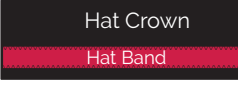
DIRECTIONS

Cutting

1. From Black, cut:
 - 2 Hat Brims*.
 - Cut on solid line. Then cut on dotted line and remove center.
 - 1 Hat Top*.
 - 1 (3½" x 11") rectangle for Crown.
2. From Hunter, cut:
 - 2 Holly Leaves*.
3. From Cardinal, cut:
 - 3 Holly Berries*.
 - 1 (1" x 11") Hat Band.
4. From batting, cut:
 - 1 (3½" x 11") rectangle.

Assembly

Attach the Hat Top

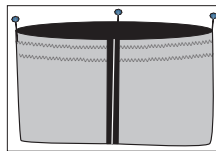
1. Spray baste (or stitch) the batting to the wrong side of the Hat Crown.
 2. With the nap going down, spray baste the Hat Band to the Crown, ½" from the bottom edge. ½" Zigzag both edges.
- 
3. Sew the short ends of the Crown/Band together to form a circle.

* From Template

Sewing Basics

- Use polyester thread in top and bobbin
- Increase stitch length to 3–4 mm.
- Use ½" seam allowance, unless otherwise indicated.
- Backstitch at the beginning and end of each seam.
- Reduce presser foot pressure when sewing multiple layers.

4. Fold the Crown in half with the seam allowance at one end. Mark the folds on both edges. Fold in half again and mark the quarter points.

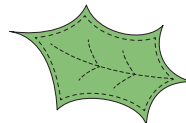


5. Right sides together, fold the Hat Top into quarters. Pin at the folds.
6. Wrong sides together, pin the Hat Top to the Crown. Sew the Hat Top to the Crown.

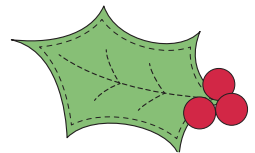
Note: Pin at the quarter marks, then between the quarter marks. Pin frequently and sew slowly.

Add the appliques

1. Spray baste the wrong side of one of the leaves. Smooth the leaves together.
2. Stitch near the outer edge around the entire leaf. Add the decorative vein stitching as indicated on the template.
3. Pin the Leaf just overlapping the Band as shown in the photo. Stitch halfway up the center vein to attach the Leaf to the Crown.

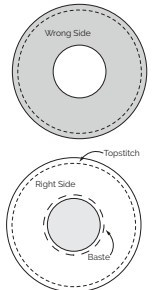


4. Spray baste the 3 Holly Berries and smooth them into place on the Band. Have at least 1 of the Berries on base of the Leaf.
5. Zigzag around the edge of each Berry.



Prepare the brim

1. Wrong sides together, sew around the outer edge of the Hat Brim. Trim the seam allowance to ¼".
2. Turn the Brim right side out. Baste along the interior circle.
3. Topstitch ¼" from the outer edge.
4. As before, find the quarter marks on the Hat Band.
5. Pin these marks to the marks on the lower Crown. Add more pins.
6. Sew the Brim to the Crown with ¼" seam allowance.



Finishing

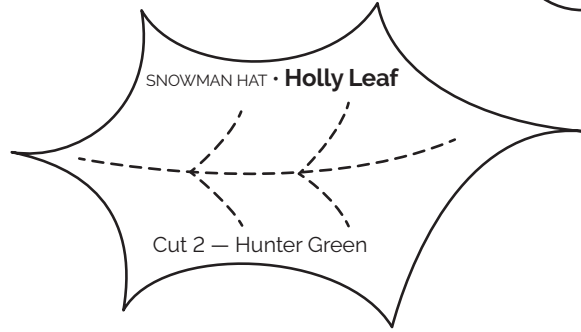
1. Put a small poof of polyester fiberfill inside the hat.
2. Attach the hat to your snowman pillow with a few basting stitches, as desired.



SNOWMAN HAT
Hat Top
 Cut 1 — Black

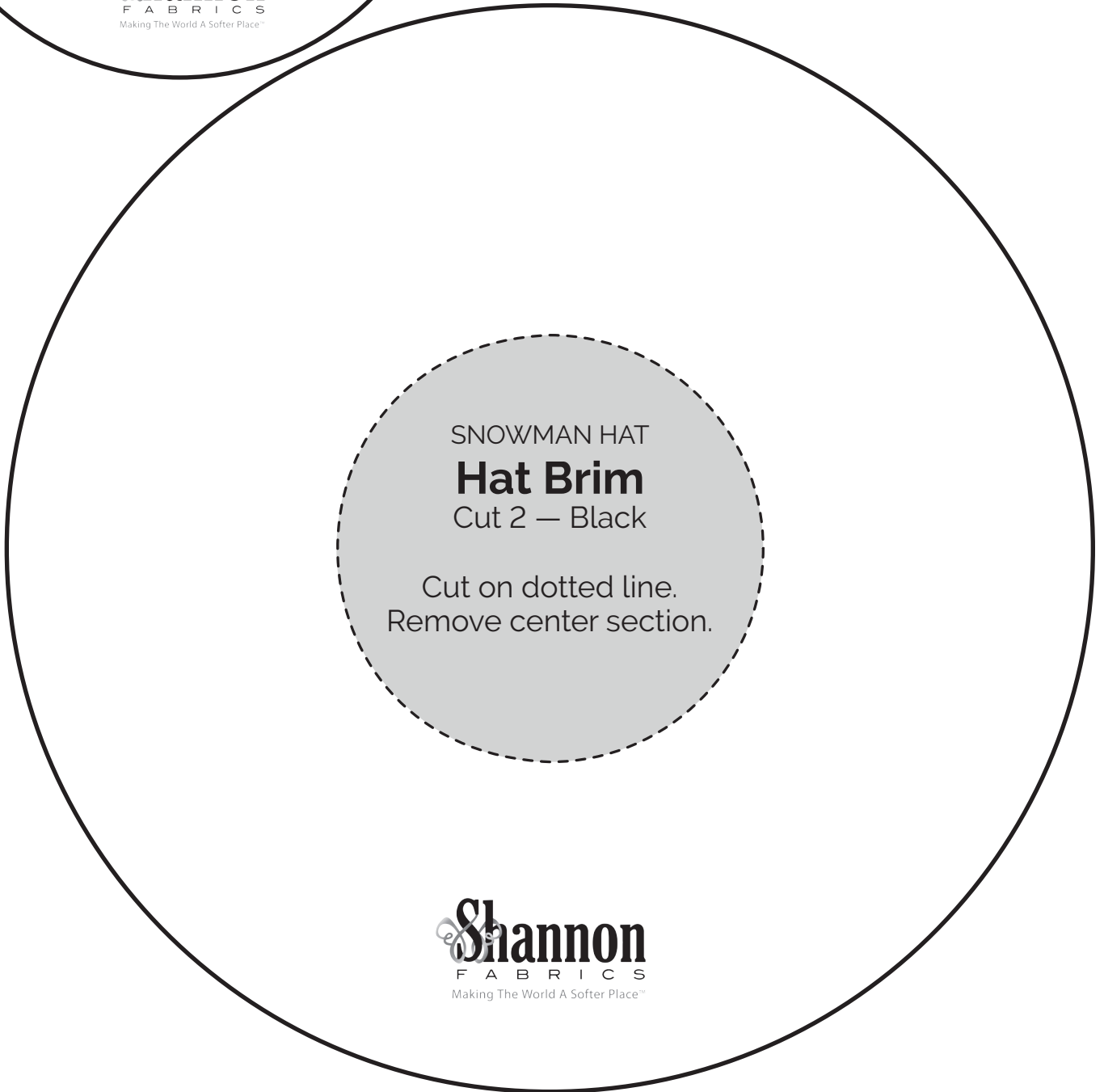


SNOWMAN HAT
Holly Berries
 Cut 3
 Cardinal



SNOWMAN HAT • **Holly Leaf**

Cut 2 — Hunter Green



SNOWMAN HAT
Hat Brim
 Cut 2 — Black

Cut on dotted line.
 Remove center section.

